

OK

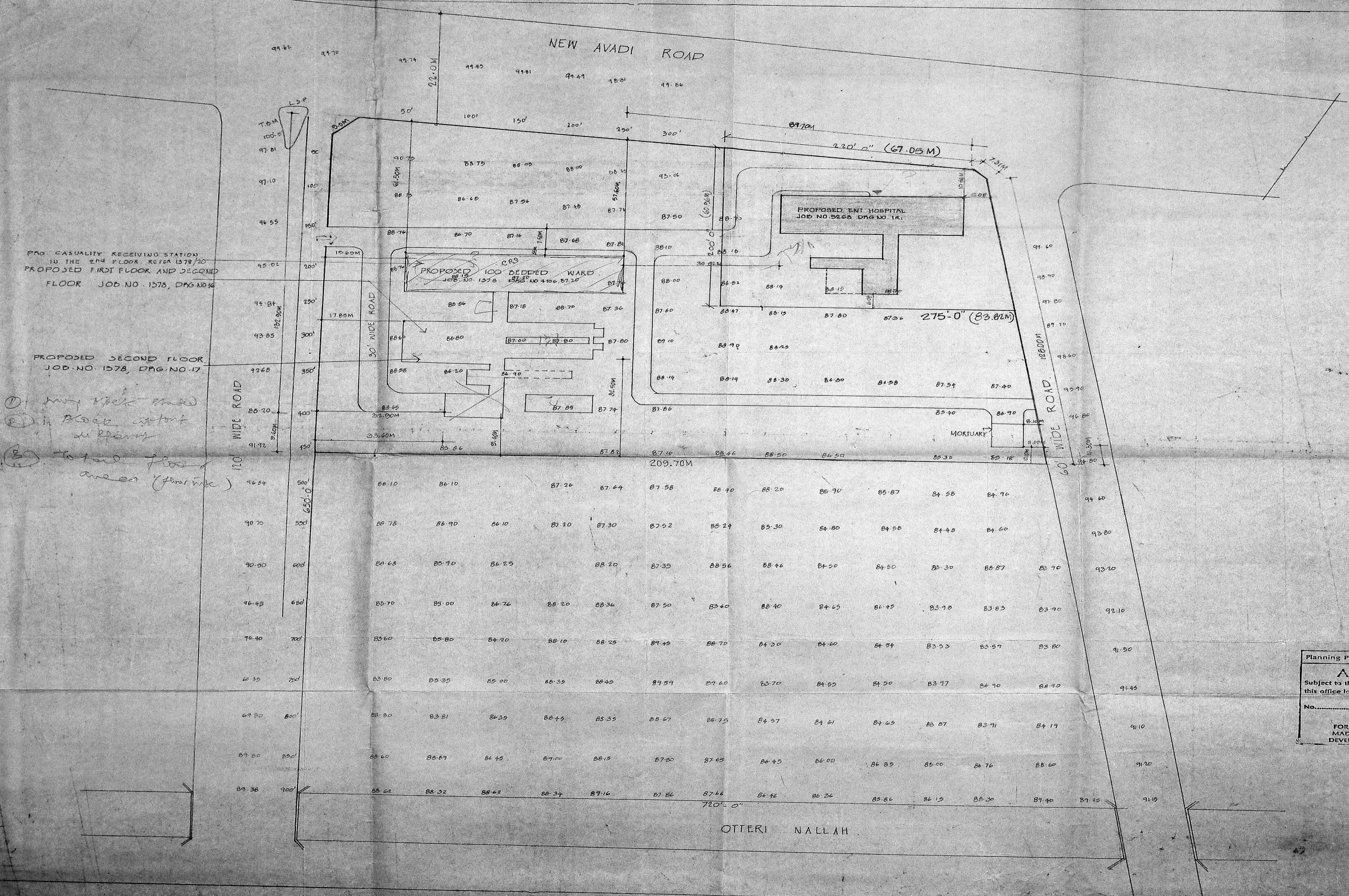
Clearance No. C/1234/V/B/190

APPROVED

Subject to the conditions in this office to

NOTES

Calcutta, 20/11/19



NO.	REVISION	SIGN	DATE
1			22.7.87
2			22.8.88
3			22.11.89

Planning Permit No.

APPROVED

Subject to the conditions in this office to

No.

FOR MEMBER SECRETARY
MADRAS METROPOLITAN
DEVELOPMENT AUTHORITY

17.11.87
CHIEF ARCHITECT

DR. CHIEF ARCHITECT SENIOR ARCHITECT

ARCHITECT ASST. ARCHITECT

OFFICE OF THE CHIEF ARCHITECT,
MADRAS

DTE - 29.6.88 SCALE - 1" = 50'

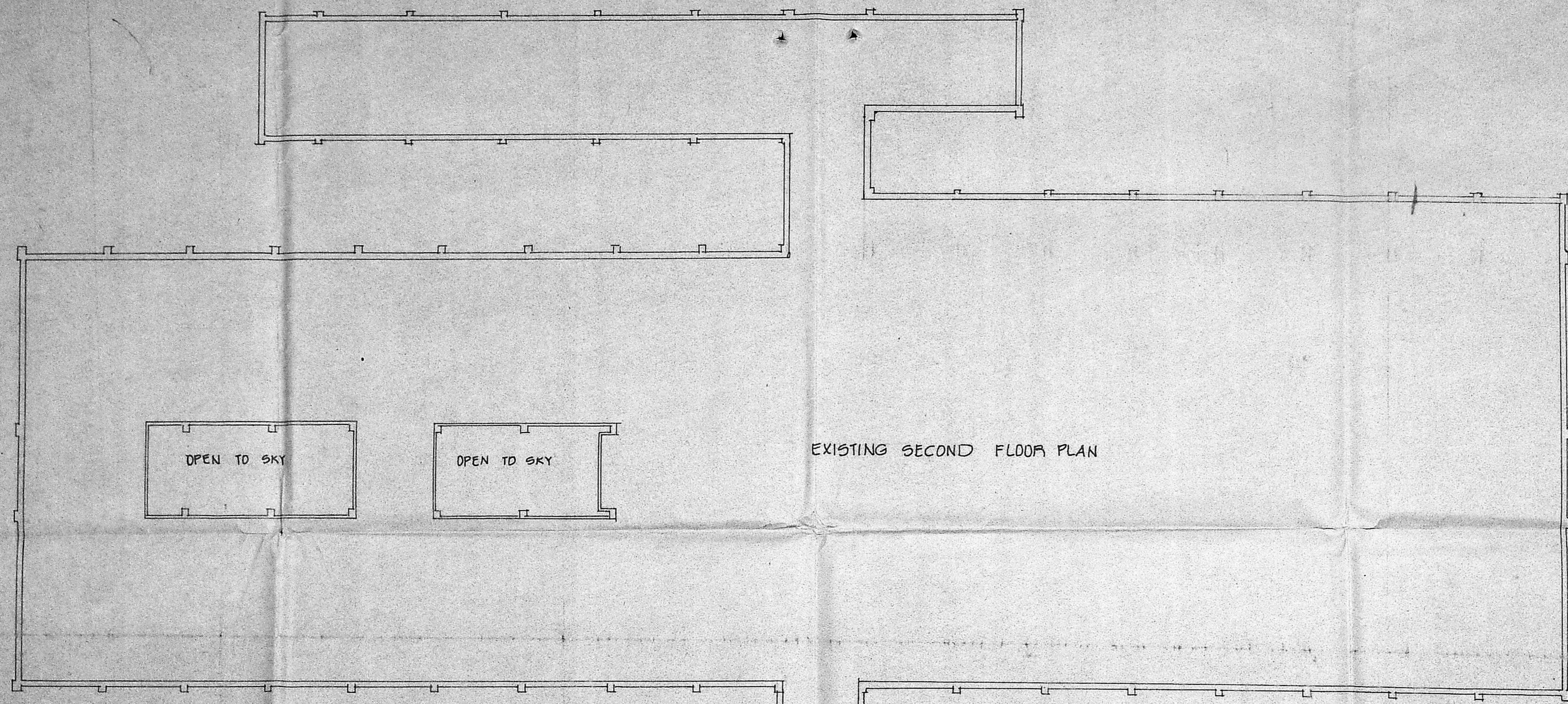
DEPT. U.S.M.	JOB NO. 1378	DRG. NO. 10
CHECKED		

PROPOSED E.N.T. HOSPITAL
AT ANNA NAGAR, MADRAS

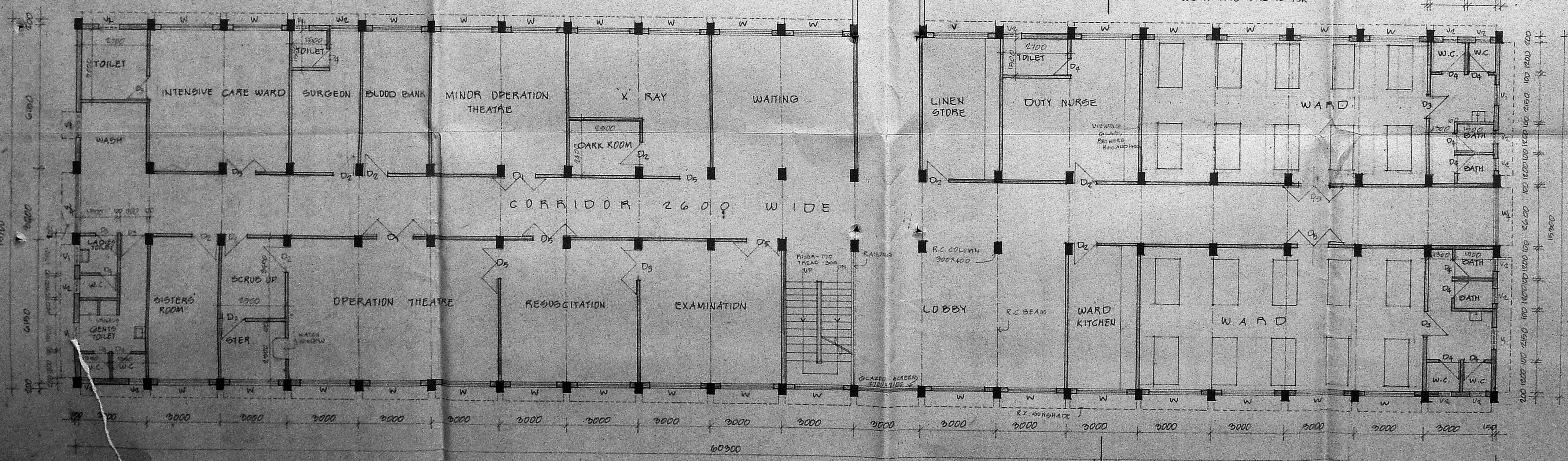
LAY OUT PLAN



- NOTES
1. ALL DIMENSIONS ARE IN MM.
 2. THIS DRAWING IS PREPARED BASED ON THE D.M.E.B. LK. ADDRESSED TO C.E.(B) PWD M.S.D. LK NO. 2880/P&D I/1/85/DT. 12.1.80
 3. PLOT AREA - 921.54 SQ.M. APPROX.



EXISTING SECOND FLOOR PLAN

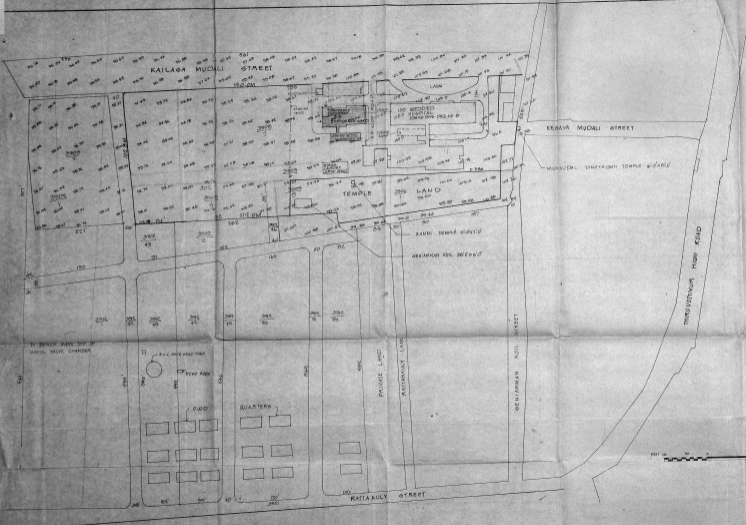


SECOND FLOOR PLAN

SECTION DETAILS REFER
JOB NO. 1378 DRG. NO. 19R

APPROVED
Subject to the conditions in
this office letter
No. CA 123/118/90 Dt. 20-11-90
FOR MEMBER SECRETARY
MADRAS METROPOLITAN
DEVELOPMENT AUTHORITY

NO.	REVISIONS	SIGN	DATE
		<i>[Signature]</i>	31-1-90
		CHIEF ARCHITECT	
		DEPUTY CHIEF ARCHITECT	
		SENIOR ARCHITECT	
		ARCHITECT	
		ASST. ARCHITECT	
OFFICE OF THE CHIEF ARCHITECT, MADRAS.			
SCALE: 1:100	DATE: 20-11-90		
DEALT BY: MALARAJ	JOB NO. 1378	DRG. NO. 20	
CHECKED: S.C.	TNUDP - TRAMP, PROPOSED CASUALTY RECEIVING STATION ACCIDENT AND EMERGENCY WARD IN THE SECOND FLOOR IN THE GOVT. PERIPHERAL HOSPITAL, ANNA NAGAR, MADRAS.		
SECOND FLOOR PLAN			



Sl. No.	Ext. No.	EXTENT OF COOPERATION	QUANTUM
1.	2702	1-10 - 0-31	COOPERATION
2.	342/61	2-0 - 0-00	DO
3.	200/3	1-0 - 1-07	TEMPLE LAND
4.	324/03	0-5 -	COOPERATION
5.	340/84	2-10 - 1-00	DO
6.	340/80	2-1 - 0-00	DO
7.	320/00	0-1 -	DO
8.	340/7	0-1 - 0-00	DO
9.	340/6	0-1 - 0-04	TEMPLE LAND
10.	320/1	1-0 - 0-00	COOPERATION
11.	200/5	0-5 - 1-05	DO
12.	340/00	0-5 - 1-00	DO
13.	320/10	0-5 - 1-00	DO

PROPOSED ACCIDENT & EMERGENCY WAKED ZONE (DOTTED)

NOTES
1. BASED ON 1:2500 SURVEYING ON CT 18 & THIS LAY OUT 846 OCCAS PREPARED
2. THIS CASE REFERENCED 202 NO. 1 108 AT 18/6
3. Planning Clearance No. 102/19/10
APPROVED
Subject to the conditions in this order later
20th MAY 1956
102 MANSUR SECRETARY
MADRAS ARCHITECTURE
DEPT. OF PUBLIC WORKS

2. ACCIDENT & EMERGENCY WAKED ZONE WITH LARGER MARGIN FOR E.E. (ALSO ON B) COPIES
3. ALL COPIES TO BE KEPT IN OFFICE
4. THE POSITION OF ACCIDENT AND EMERGENCY WAKED ZONE SHOULD BE KEPT AS SHOWN ON THIS LAY OUT (18/10-1) ON 18/10/56

NO. OF DRAWINGS - 4
NO. OF SHEETS - 1
NO. OF ARCHITECTS - 1
NO. OF ENGINEERS - 1
NO. OF ASSISTANTS - 1

OFFICE OF THE CHIEF ARCHITECT MADRAS

ORDER: 15/55/17
DATE: 3/7/56
JOB NO. 1296
PAGE NO. 7/11

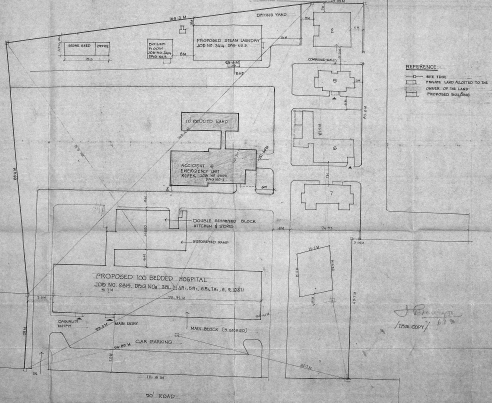
PROPOSED 100 BEDDED HOSPITAL AT TONDIARPET.

LAYOUT PLAN

Planning Clearance No. 12/20/24 / 20/24
APPROVED
 Subject to the conditions in the approval
 C. S. Anand
 103 MEMBER SECRETARY
 MADRAS CITY CORPORATION
 CORPORATION OFFICE

- LEGEND**
1. 100 BEDDED HOSPITAL JOB NO. 2845, DRG NO. 2845
 2. MASTERY DRG NO. 10, JOB NO. 2845
 3. STAFF LAMBERY DRG NO. 230, JOB NO. 2845
 4. KITCHEN DRG NO. 231, JOB NO. 2845
 5. DISPENSARY DRG NO. 232, JOB NO. 2845
 6. DISPENSARY DRG NO. 233, JOB NO. 2845
 7. D. M.O.S. SURPASS DRG NO. 1, JOB NO. 2725

**PUBLIC WORKS DEPT
TAMILNADU**



- REFERENCE**
- 1. SEE PLAN
 - 2. PRIVATE LAND ALLOTTED TO BE
 - 3. OWNER OF THE LAND
 - 4. PROPOSED BUILDING

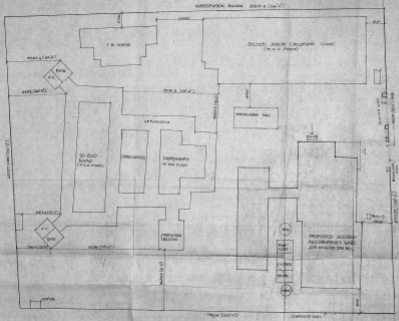
NO.	DESCRIPTION	DATE
1.	APPROVED BY CHIEF ARCHT. IN THE OFFICE ON 10.12.24	
2.	FOR THE 100 BEDDED HOSPITAL AND STAFF LAMBERY BY CHIEF ARCHT. IN THE OFFICE ON 10.12.24	
3.	FOR THE 100 BEDDED HOSPITAL AND STAFF LAMBERY BY CHIEF ARCHT. IN THE OFFICE ON 10.12.24	
4.	FOR THE 100 BEDDED HOSPITAL AND STAFF LAMBERY BY CHIEF ARCHT. IN THE OFFICE ON 10.12.24	
5.	FOR THE 100 BEDDED HOSPITAL AND STAFF LAMBERY BY CHIEF ARCHT. IN THE OFFICE ON 10.12.24	
6.	FOR THE 100 BEDDED HOSPITAL AND STAFF LAMBERY BY CHIEF ARCHT. IN THE OFFICE ON 10.12.24	
7.	FOR THE 100 BEDDED HOSPITAL AND STAFF LAMBERY BY CHIEF ARCHT. IN THE OFFICE ON 10.12.24	
8.	FOR THE 100 BEDDED HOSPITAL AND STAFF LAMBERY BY CHIEF ARCHT. IN THE OFFICE ON 10.12.24	
9.	FOR THE 100 BEDDED HOSPITAL AND STAFF LAMBERY BY CHIEF ARCHT. IN THE OFFICE ON 10.12.24	
10.	FOR THE 100 BEDDED HOSPITAL AND STAFF LAMBERY BY CHIEF ARCHT. IN THE OFFICE ON 10.12.24	
11.	FOR THE 100 BEDDED HOSPITAL AND STAFF LAMBERY BY CHIEF ARCHT. IN THE OFFICE ON 10.12.24	
12.	FOR THE 100 BEDDED HOSPITAL AND STAFF LAMBERY BY CHIEF ARCHT. IN THE OFFICE ON 10.12.24	
13.	FOR THE 100 BEDDED HOSPITAL AND STAFF LAMBERY BY CHIEF ARCHT. IN THE OFFICE ON 10.12.24	
14.	FOR THE 100 BEDDED HOSPITAL AND STAFF LAMBERY BY CHIEF ARCHT. IN THE OFFICE ON 10.12.24	
15.	FOR THE 100 BEDDED HOSPITAL AND STAFF LAMBERY BY CHIEF ARCHT. IN THE OFFICE ON 10.12.24	
16.	FOR THE 100 BEDDED HOSPITAL AND STAFF LAMBERY BY CHIEF ARCHT. IN THE OFFICE ON 10.12.24	
17.	FOR THE 100 BEDDED HOSPITAL AND STAFF LAMBERY BY CHIEF ARCHT. IN THE OFFICE ON 10.12.24	
18.	FOR THE 100 BEDDED HOSPITAL AND STAFF LAMBERY BY CHIEF ARCHT. IN THE OFFICE ON 10.12.24	
19.	FOR THE 100 BEDDED HOSPITAL AND STAFF LAMBERY BY CHIEF ARCHT. IN THE OFFICE ON 10.12.24	
20.	FOR THE 100 BEDDED HOSPITAL AND STAFF LAMBERY BY CHIEF ARCHT. IN THE OFFICE ON 10.12.24	

NO.	REVISION	DATE
1.	FOR THE 100 BEDDED HOSPITAL AND STAFF LAMBERY BY CHIEF ARCHT. IN THE OFFICE ON 10.12.24	
2.	FOR THE 100 BEDDED HOSPITAL AND STAFF LAMBERY BY CHIEF ARCHT. IN THE OFFICE ON 10.12.24	
3.	FOR THE 100 BEDDED HOSPITAL AND STAFF LAMBERY BY CHIEF ARCHT. IN THE OFFICE ON 10.12.24	
4.	FOR THE 100 BEDDED HOSPITAL AND STAFF LAMBERY BY CHIEF ARCHT. IN THE OFFICE ON 10.12.24	
5.	FOR THE 100 BEDDED HOSPITAL AND STAFF LAMBERY BY CHIEF ARCHT. IN THE OFFICE ON 10.12.24	
6.	FOR THE 100 BEDDED HOSPITAL AND STAFF LAMBERY BY CHIEF ARCHT. IN THE OFFICE ON 10.12.24	
7.	FOR THE 100 BEDDED HOSPITAL AND STAFF LAMBERY BY CHIEF ARCHT. IN THE OFFICE ON 10.12.24	
8.	FOR THE 100 BEDDED HOSPITAL AND STAFF LAMBERY BY CHIEF ARCHT. IN THE OFFICE ON 10.12.24	
9.	FOR THE 100 BEDDED HOSPITAL AND STAFF LAMBERY BY CHIEF ARCHT. IN THE OFFICE ON 10.12.24	
10.	FOR THE 100 BEDDED HOSPITAL AND STAFF LAMBERY BY CHIEF ARCHT. IN THE OFFICE ON 10.12.24	
11.	FOR THE 100 BEDDED HOSPITAL AND STAFF LAMBERY BY CHIEF ARCHT. IN THE OFFICE ON 10.12.24	
12.	FOR THE 100 BEDDED HOSPITAL AND STAFF LAMBERY BY CHIEF ARCHT. IN THE OFFICE ON 10.12.24	
13.	FOR THE 100 BEDDED HOSPITAL AND STAFF LAMBERY BY CHIEF ARCHT. IN THE OFFICE ON 10.12.24	
14.	FOR THE 100 BEDDED HOSPITAL AND STAFF LAMBERY BY CHIEF ARCHT. IN THE OFFICE ON 10.12.24	
15.	FOR THE 100 BEDDED HOSPITAL AND STAFF LAMBERY BY CHIEF ARCHT. IN THE OFFICE ON 10.12.24	
16.	FOR THE 100 BEDDED HOSPITAL AND STAFF LAMBERY BY CHIEF ARCHT. IN THE OFFICE ON 10.12.24	
17.	FOR THE 100 BEDDED HOSPITAL AND STAFF LAMBERY BY CHIEF ARCHT. IN THE OFFICE ON 10.12.24	
18.	FOR THE 100 BEDDED HOSPITAL AND STAFF LAMBERY BY CHIEF ARCHT. IN THE OFFICE ON 10.12.24	
19.	FOR THE 100 BEDDED HOSPITAL AND STAFF LAMBERY BY CHIEF ARCHT. IN THE OFFICE ON 10.12.24	
20.	FOR THE 100 BEDDED HOSPITAL AND STAFF LAMBERY BY CHIEF ARCHT. IN THE OFFICE ON 10.12.24	

J. H. Anand
 10/12/24

**PROPOSED 100 BEDDED
PERIPHERAL HOSPITAL AT
PERAMBUR - MADRAS**

LAY-OUT PLAN



APPROVED

DATE: 11-11-55

1. ALL THE WORKS TO BE COMPLETED BY 15-12-55.
2. THE WORK SHOULD BE COMPLETED WITHIN THE ESTIMATED COST OF Rs. 1,00,000.

1. THE WORK HAS BEEN APPROVED BY THE CHIEF ARCHITECT, MADRAS, ON 11-11-55.

S. M. SUNDARARAJAN
CHIEF ARCHITECT

BY ARCHITECT: S. M. SUNDARARAJAN
DATE: 11-11-55

ARCHITECT: S. M. SUNDARARAJAN

OFFICE OF THE CHIEF ARCHITECT, MADRAS

SCALE: 1/4" = 1'-0"

DEPT. FORM NO. 108
JOB NO. 5895
DRG. NO. 1B

PROPOSED QUALITY RECORDING STATION AND 10 BEDDED WARD IN GOVT HOSPITAL AT SANDAPET.

DATE: 11-11-55

PROJECT NAME